

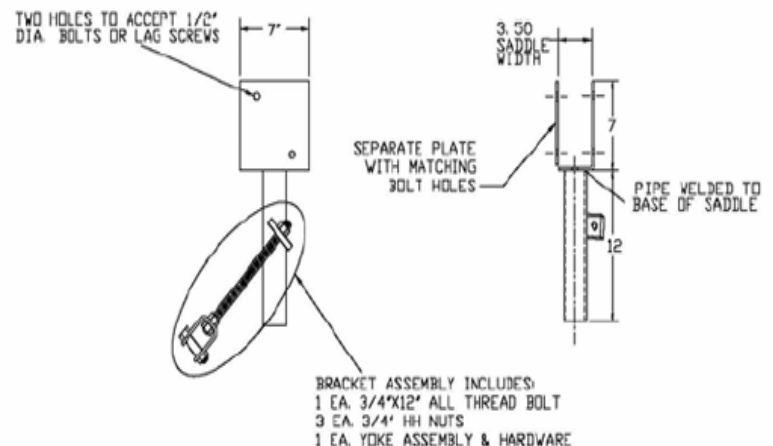
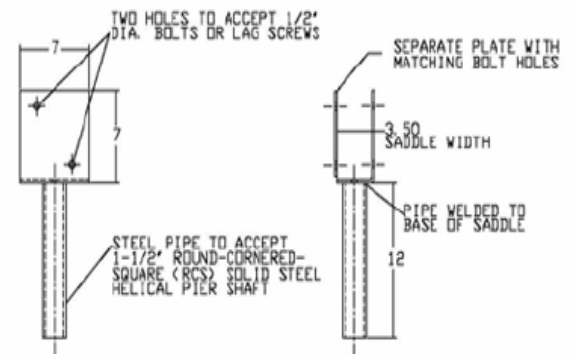
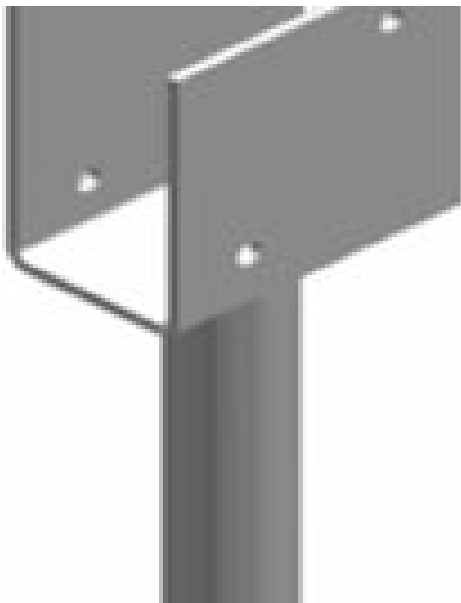


Timber Bracket:

These brackets are used to connect timber beams to helical piles. The split bracket design is more universal because variability in timber beam thickness does not pose a construction problem. Both of these brackets fit over an SS5.

1. C110-0682 bracket has an ultimate rating of 10,000 lb in compression.
2. C110-0736 is designed to attach to battered piles for lateral support.

Standard finish is Hot Dipped Galvanized per ASTM A153. For different size shafts, mounting holes, or special finishes please contact us.



To order or for more information contact us at:

Boatmoorings.com

PO Box 119

Milford, NH 03055

603-672-1751

dmerril@boatmoorings.com