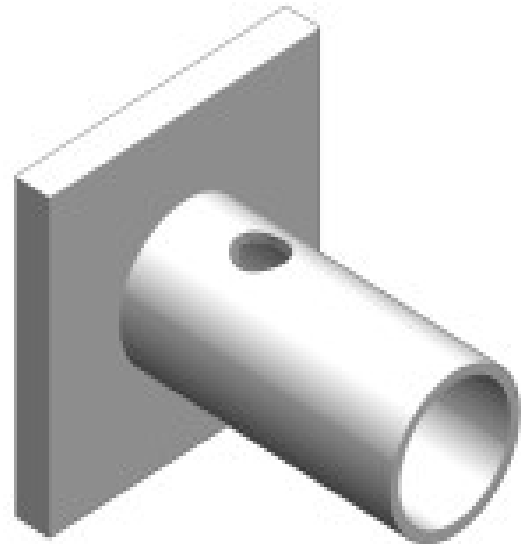
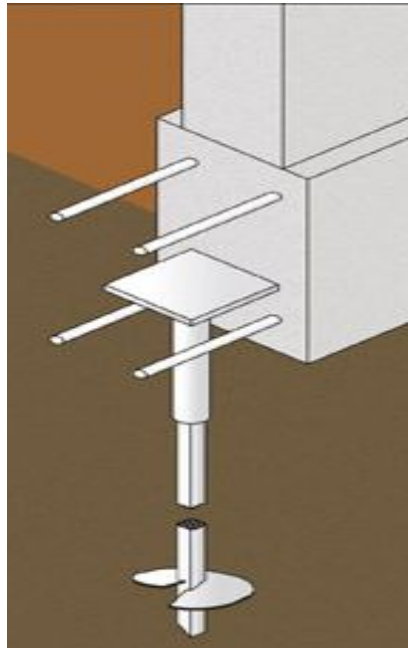




New Construction Pile Cap:

New Construction Pile Caps are installed as a termination device to the top of a Helical Pile Installation. Once the pile installation has been completed, the load is transferred to the structure.

It is recommended that a registered Professional Engineer conduct the design.



To order or for more information contact us at:

Boatmoorings.com

PO Box 119

603-672-1751

dmerrill@boatmoorings.com